

Description

NKLA109

- * NKLA109 (with manual lowering) is a strong and fast motion actuator. Functions of manual lowering and anti-pinch are available. Large thrust and small installing dimensions make it has wide applications.
- * Special worm gear for safety and longer service life.
- * Safety nut to avoid unintended rapid lowering due to the damage of the nut.
- * Electronic limit switches and mechanical limit.
- * Manual lowering to ensure nursing carers could lower the actuator or other emergency occurs.
- * These features make NKLA109 a good choice to be applied in patient lifters and other medical furniture.



Specifications

- * Thrust up to 8000N
- * Color: light gray or black
- * Manual lowering: red
- * IP Grade: IP66
- * Input voltage: 24VDC/29VDC
- * Stroke length: 0-400mm(± 2 mm)
- * Retracted length: $L=S+260$ ($S < 300$),
 $L=S+290$ ($300 \leq S \leq 400$)
- * Noise level ≤ 50 dB (ambient noise ≤ 40 dB)
- * Safety nut: necessary
- * Built-in electrical limit switches
- * Mechanical limits: upper and down
- * Wire length optional
- * Options:
 1. Anti pinch, push and pull only
 2. Safety nut option: In case of emergency, the actuator can be down, only push no pull
- * Compatible with: NKCB62
- * Duty Cycle: 10%; continuous work for most 2 minutes with a pause of 18 minutes
- * Using temperature: 0-50°C
- * Storage temperature: -10-50°C

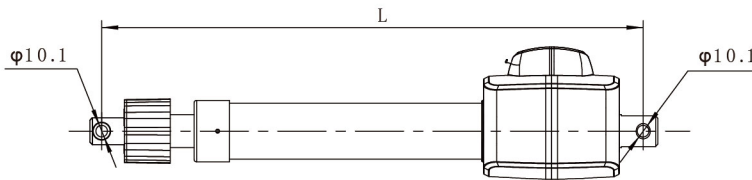
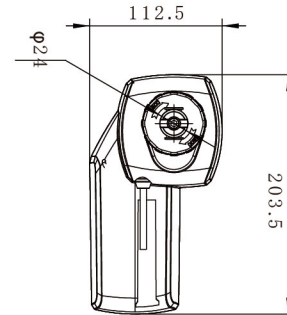
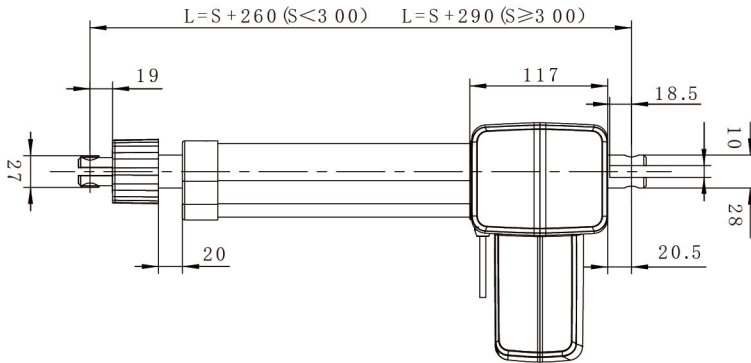
Dimensions

Power Supply(VDC)	24	29	29(NKCB62)
Spindle Pitch(mm)	2.5	2.5	2.5
Max Load Push(N)	8000	8000	8000
Self-Lock Load(N)	8000	8000	8000
Speed at no/full Load(mm/s)	8.2/6	10/7.5	8.5/7
Current at Full Load(A)	8	8	8

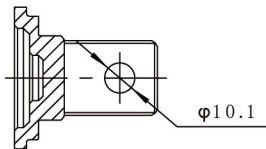
- * These data above are typical ones
- * When the actuators are not running, Jiechang's control boxes could short-circuit the motor terminals (electrodes). Such solutions give actuators higher self-locking load

Dimensions

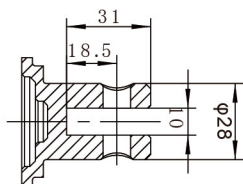
Dimensions with manual lowering



End Clevis

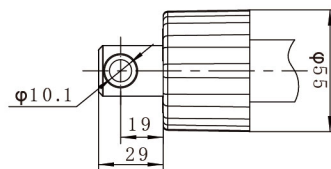
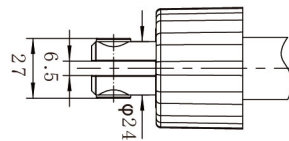


V=vertical 90°



V=vertical 90°

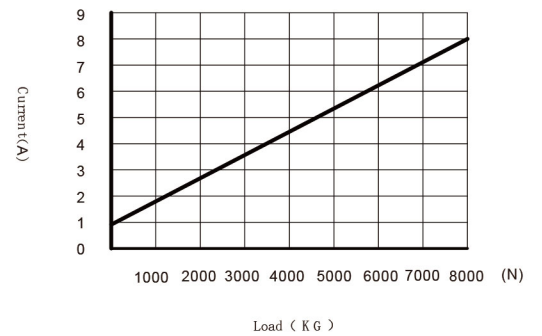
Top Clevis



60=hole 12.5, 10.1 with bushing, slot 6.5

Performance Data (24V DC)

Current VS Load



Speed VS Load

